



KEEP YOUR BUSINESS ROLLING

Tyres

Batteries

Oil/Lubricants

Spare Parts

Accessories

Telephone: +44 (0)207 0788 123 • Email: sales@exportize.co.uk • Web: www.exportize.co.uk

ABOUT US

Looking for superior quality tyres, batteries and oil/ lubricants?

Exportize are the experts in sourcing and exporting the best tyres and automotive products, globally.


We have over 28 years in the industry, so we're the best at sourcing the highest quality products at the most competitive prices - thanks to our close relationships with clients and suppliers alike. What's more, we pride ourselves on ensuring delivery is on time, all the time.

Here at Exportize, our friendly team have a real passion for what we do. You can be assured that your business is in good hands from the moment you place your order, to the prompt delivery of products at your premises.

What makes us different?

Not only do we view our valued customers as business partners, we also seek to develop relationships with like-minded companies who are as committed to service excellence, reliability and growth as we are. We think it's these companies who will succeed, and we want to contribute to that growth by constantly exceeding expectations, always adding value and most importantly - never making excuses.

Exportize are about more than just tyres - we also distribute a comprehensive range of batteries, oils/lubricants, spare parts, wheels and accessories, globally.



“At Exportize Ltd, we build long-term relationships through dedicated people and quality tyres. Our company is one team, one network - dedicated to exceeding our customer's expectations every time they call.”

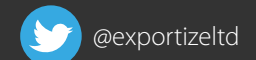
Trevor Woodcock, MD.

Westmead House, Farnborough, Hampshire GU14 7LP. England

Telephone: +44 (0)207 0788123 • Fax: +44 (0)1252 514578

Email: sales@exportize.co.uk

Web: www.exportize.co.uk





Lab Test of Rubber Valve

Installation Tests:



The installation tests were carried-out according to ETRTO 'Methods for testing snap-in tubeless tyre valves'

Ozone Resistance

After the determined time, none of the samples show cracks due to the Ozone exposure



Rubber-Metal-Adhesion



The sum of imperfections (uncovered metal) on all samples was far from the limit of 40 mm²

Bust & Leaking Tightness

After applying the burst pressure of 12 bar within one minute, each valve type has to sustain the applied pressure two additional minutes.

The leak tightness test was conducted and no leakage has been noticed on any samples provided.



Snap-in Tubeless Tire Valves



Colorful Sleeve Snap-in Tubeless Valves

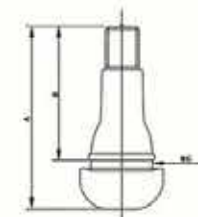


Part No.	ETRTO No. (Ref. No.)	Rim Hole Dia. (mm/in.)	Est. Length (mm)	Parts		A	R	C
				Core	Cap			
TR412	V2.03.6	11.5/453"	22	9002#	VCB-BLACK	33	22	15
TR413	V2.03.1	11.8/463"	30			42.5	32	15
TR414	V2.03.2	11.5/453"	38			48.5	38	15
TR414L	V2.03.8	11.5/453"	45			58.5	40	15
TR418	V2.03.4	11.5/453"	49			61.5	51	15
TR423		11.5/453"	62			74	63.5	15
TR415	V2.03.3	16/625"	30			42.5	32	19.2
TR425		16/625"	49			61.5	51	19.2
TR438	V2.03.5	16.8/346"	32			40.5	31	11

Caution

Maximum operating pressure (cont. tyres): 4.5 bar
check that rim holes are free from burrs and have a smooth, flat rust-free surface.

Rubber valves must be mounted on all rim types (aluminum or steel) having thickness of 1.8 mm. at max 3.5 mm





→ High Pressure Tubeless Tire Valves



Part No.	Rim Hole Dia. (mm/IN)	R/L Length (mm)	Parts	
			O-ring	Cap
TR600HP	11.5/453"	31	9002W	VC8-BLACK
TR602HP		50	9002W	VC8-BLACK
TR801HP	16/825"	33	9002W	VC8-BLACK
TR802HP		50	9002W	VC8-BLACK

Caution

TR600HP/802HP tubeless snap-in type valve for high pressure maximum cold inflation pressure is 5.5 bar

TR801HP/802HP tubeless snap-in type valve for high pressure maximum cold inflation 7 bar.

← Tubeless Metal Clamp-in Tire Valves



Part No.	R/L Length (mm)	Rim Hole Dia. (mm/IN)	Parts			
			Rubber Grommet	Washer	Nut	Cap
V2.04.1	17.5x35	11.5/453"	V9.11.7		V9.7.1	FT
TR416	17x40	16/825"	RG39	RW13	HN4	FT
TR416B	17x38/34	11.5/453" 16/825"	RG39 RG54	RW8	HN4	AT
TR416S	17x40	11.5/453"	RG54	RW1	HN4	FT
TR416L	16.7x39	11.5/453"	RG59	RW1	HN4	FT
TR416SS	14x38	11.5/453"	V801	RW1	HN8	FT
TR416SSS	14x39	8.3/327"	RG11	RW7	HN8	FT
MS525S	17.5x42	11.5/453"	RG9 RG54	RW15	HN6	FT
MS525L	17.5x42	11.5/453"	RG9 RG54	RW15	HN7	FT
MS525S	16x33	11.5/453"	RG54	RW15	HN9	FT
MS525L	16x36/45"	11.5/453"	RG4 RG6	RW5	HN4	ET

→ Tubeless Metal Clamp-in Tire Valves



Part No.	ET/TTD No. (Ref. No.)	Rim Hole Dia. (mm/IN)	R/L Length (mm)	Parts			
				Rubber Grommet	Washer	Nut	Cap
TR891B	WH402	11.5/453" 16/825"	19x34	RG39 RG54	RW8	HN4	AT
V-3	TR33E/WH23A	11.5/453"	14x33	HRG2x2	RW5	HN2x2	ET/BT
V-4	TR43E/WH206		14x43				
V-5	TR48E		14x48				
V-6	TR53E/WH204		14x43				
V-7	TR63E		14x63	HRG1.HG2	RW12		
V-8	TR34A		16x34				
VS-8	TR26G/PVR43A		16x38				
V-9	JS43E		16x43				
VS-8-45°	WH003/PVR75A		16x53-45°				ET/BT
VS-8-90°			16x53-90°				
TR6006C	TRJF844	16/825"	17.5x34	RG39	RW8	HN4x2	DT
PVR152		11.5/453"	16x65-90°	RG54	RW8	HN4	ET/BT
PVR153		11.5/453"	17x70-90°	RG54	RW8	HN4	ET/BT
VS-6		6/239"	11x40				
TR435		11.5/453"	19x34	RG54	RW8	HN4	ET/BT

Caution

Valve torque: 5 to 6.1 N.M. You can grease the couple washer before mounting.

← Tubeless Metal Clamp-in Tire Valves for Motorcycles and Scooters



Part No.	R/L Length (mm)	Rim Hole Dia. (mm/IN)	Parts		
			Rubber Grommet	Nut	Cap
PVR70	20x30x90°	11.5/453"			VC8-BLACK
PVR71L	20x30x90°	11.5/453"			VC8-BLACK
PVR32	15x54x90°	11.5/453"		SNM5	VC8-BLACK
PVR79L	15x72x90°	11.5/453"	HRG4HG4	SNM5	VC8-BLACK
PVR30	15x63x90°	11.5/453"	HRG2HG2	NH2	VC8-BLACK



Tubeless Metal Clamp-in Tire Valves for Truck and Bus



Part No.	ETRTO No.	Ref. Length (mm)	Parts				
			Core	Rubber Grommet	Washer	Nut	Cap
TR500	V3.21.3	19x55	9002#	RG15	RW8	HN13	DT
TR501	V3.21.2	19x42	9002#	RG15	RW8	HN13	DT
TR502	64MS15.7	19x64	9002#	RG15	RW8	HN13	DT
TR570	V3.21.4	19x84	9002#	RG15	RW8	HN13	DT
TR571	V3.21.5	19x90	9002#	RG15	RW8	HN13	DT
TR572	V3.21.6	19x100	9002#	RG15	RW8	HN13	DT
TR573	V3.21.7	19x115	9002#	RG15	RW8	HN13	DT
TR574	V3.21.8	19x131	9002#	RG15	RW8	HN13	DT
TR575	V3.21.1	19x33	9002#	RG15	RW8	HN13	DT
TR570C	V3.21.9	19x84-90°27°	9002#	RG15	RW8	HN13	DT

European Style O-ring Seal Clamp-in Brass Tire Valves for Truck and Bus



Part No.	Ref. Length (mm)	Parts			
		Core	Rubber Grommet	Nut	Cap
V3.20.1	16x41	9002#	V9.115(RG60)	V9.07.2	DT
V3.20.2	16x95/17.50	9002#	V9.115(RG60)	V9.07.2	DT
V3.20.3	16x82	9002#	V9.115(RG60)	V9.07.2	DT
V3.20.4	16x90	9002#	V9.115(RG60)	V9.07.2	DT
V3.20.5	16x70	9002#	V9.115(RG60)	V9.07.2	DT
V3.20.6	16x115	9002#	V9.115(RG60)	V9.07.2	DT
V3.20.7	16x80	9002#	V9.115(RG60)	V9.07.2	DT
V3.20.8	16x119	9002#	V9.115(RG60)	V9.07.2	DT
V3.20.9	16x102	9002#	V9.115(RG60)	V9.07.2	DT
V3.20.10	16x80	9002#	V9.115(RG60)	V9.07.2	DT
150MS-27	16x150	9002#	V9.115(RG60)	V9.07.2	DT
DC1390	16x58	9002#	V9.115(RG60)	V9.07.2	DT

Air-liquid Tire Valves for Agricultural Tractors



Part No.	ETRTO No.	Ref. Length (mm)	Core Housing		Parts		
			Core	O-ring	Rubber Grommet	Washer	Cap
TRCH3	V4.02.1	11x36	9002#	HRG33 (V9.11.6)			
TRCH1		11x36					
TR618A	V5.01.1	22.5x30/510	TRCH3		RG7	RW11	HN1
DVC601		22.5x56					DT
TR621A	V5.02.1	22.5x93/113/65°	9002#	HRG33 (V9.11.6)	RG7	RW11	HN1
TR622A	V5.02.2	22.5x137/158/90°					
TR623A	V5.02.3	22.5x74/95/65°	TRCH3				

Large Bore Swivel Type Tire Valves



Part No.	Stem No.	ENRTO No.	A	B	ø"
TRJ650-03	TRJ650-02	V5.04.1	27	79	80
TRJ651-03	TRJ651-02	V5.04.2	32	119	90
TRJ652-03	TRJ652-02		27	140	86
TRJ653-03	TRJ653-02		27	64	80
TRJ654-03	TRJ654-02		27	79	80
TRJ655-03	TRJ655-02		24	79	74
TRJ656-03	TRJ656-02		67	94	90
TRJ657-03	TRJ657-02		27	102	80
TRJ658-03	TRJ658-02		27	140	80
TRJ659-03	TRJ659-02		48	89	90
TRJ660-03	TRJ660-02		48	222	90
TRJ669-03	TRJ669-02		27	64	90

Air-liquid Tube Type Tire Valves



Part No.	Parts			
	Nuts	Core	Washer	Cap
SP4	HN2	9002#		VC8 or DT
SP6	HN1 HN11	9002#		
SP7		TRCH3	RW21	



European Style Clamp-in Valves



V3.12.1

Part No.	Ref. Length (mm)	Parts			
		Grommet	Nut	Core	Cap
V3.12.1	26x21.5x40	V9.11.4	V9.13.1	9002#	CAP25
V3.12.2	26x21.5x95				



V3.13.1

Part No.	Ref. Length (mm)			Parts			
	D	A	W	Grommet	Nut	Core	Cap
V3.13.1	46.5	42.5	153°	V9.11.4	V9.13.1	9002#	CAP25
V3.13.2	30	29	126°				



V3.14.1

Part No.	Ref. Length (mm)			Parts			
	B	A	C	Grommet	Nut	Core	Cap
V3.14.1	26	21.5	24.5	V9.11.4	V9.13.1	9002#	CAP25
V3.14.2	45	21.5	24.5				



V3.15.1

Part No.	Ref. Length (mm)			Parts			
	B	A	W	Grommet	Nut	Core	Cap
V3.15.1	14	22.5	110°	V9.11.2	V9.13.1	9002#	CAP25
V3.15.2	11	15.5	95°				



V3.16.1

Part No.	Ref. Length (mm)			Parts			
	A	B	W	Grommet	Nut	Core	Cap
V3.16.1	36	29	150°	V9.11.4	V9.13.1	9002#	CAP25



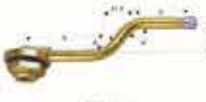
V3.17.1

Part No.	Ref. Length (mm)			Parts			
	B	A	W	Grommet	Nut	Core	Cap
V3.17.1	31.5	99	172°	V9.11.2	V9.13.1	9002#	CAP25
V3.17.2	31.5	116	172°				



V3.18.1

Part No.	Ref. Length (mm)				Parts			
	B	D	E	W	Grommet	Nut	Core	Cap
V3.18.1	64	24.5	14.5	146°	V9.11.2	V9.13.1	9002#	CAP25
V3.18.2	81	24.5	14.5	146°				
V3.18.3	51	37.5	19.5	138°				
V3.18.4	51	37.5	19.5	138°				



V3.19.1

Part No.	Ref. Length (mm)				Parts			
	B	D	E	W	Grommet	Nut	Core	Cap
V3.19.1	92	24.5	14.5	147°	V9.11.2	V9.13.1	9002#	CAP25
V3.19.2	76	24.5	15	145°				
V3.19.3	91	24.5	10	145°				
V3.19.4	91	24.5	10	145°				

Tube Valves



TR4



TR6



(TR NO.)	ETRTO NO.	EF. Length (mm)	Parts			
			Core	Washer	Cap	Cap
TR4(V1.09.1)	Z1-10-2(TZ5-33)	45x34	9002#	RW12 or YD6	HN2X2	VC8-E or VC8
TR6		68/42x34.5		YD6		
Z1-10-1	Z1-10-1(TZ5-30)	40x31		YD6	LM6 YM6	
Z1-10-3	Z1-10-3(TZ5-40)	50x41		YD5	LM5 YM5	
V1.06.1	V1.06.1	25x26/34			V9.03.2	



TR13



TR15

Part No.	ETRTO No. (Ref. No.)	Rim Hole	A	B	C	Core
TR13	V2.01.1	11.50mm/453°	56mm	38mm	11.5mm	9003#
TR15	V2.01.2	16.00mm/625°	56mm	38mm	16.00mm	9003#



TR218A



TR220A

(TR NO.)	ETRTO NO.	A	B	Core Housing	Lock Nut	Cap
TR218A	V4.01.1	27	65	TRCH3	TRLN10	VC618
TR218A	V4.01.2	27	95			
TR220A	V4.0102	35.5	63.5			



Valve Extensions

EX210-VEH1



EXFM

Part No.	Description	Length(mm)	Diameter(mm)
EX170R	Flexible rubber valve extension	75	12/10
EX100R		100	12/10
EX125R		125	12/10
EX150R		150	12/10
EX180R		180	12/10
EX210R		210	12/10
EX210R-VEH1		210	12/10
EX250R		250	12/10
EX270R		270	12/10
EX300R		300	12/10

Part No.	Description	Length(mm)	Diameter(mm)
EX64RM	Stainless steel braided rubber valve extension	65	12/10
EX125RM		125	12/10
EX150RM		150	12/10
EX180RM		180	12/10
EX210RM		210	12/10
EX250RM		250	12/10
EX300RM		300	12/10



EX115P



EX125P

Part No.	Description	Eff. Length(mm)	Total Length(mm)
EX51P	Plastic valve extension	33.5	51
EX71P		53.5	71
EX95P		77.5	95
EX115		97.5	115
EX125P		107.5	125
EX150P		132.5	150
EX170P		152.5	170
EX180P		162.5	180
EX200P		182.5	200



EX115M EX125M EXMB-45 EXMB-67 EXMB-90

Part No.	Description	Eff. Length(mm)	Total Length(mm)
EX40M	Brass valve extension	34	40
EX80M		54	60
EX84M		78	84
EX8115M		100	115
EX125M		110	125
EX142M		127	142



Part No.	Eff. Length(mm)	Total Length(mm)
EX13M	13	21
EX19M	19	28
EX32M	32	41



VEH1



VEH2



VEH3

TPMS Valves



TPMS413



TPMS01



TPMS02



TPMS03



TPMS04



TPMS05



TPMS06



TPMS07



TPMS08



TPMS09



TPMS10

Valve Cores



9001



9002



9003



9004



9005



9006



9007



9008

Valve Caps



VC8



VC8-B



VC8-G



VC8-R



VC8-CL



VC8-1



EP



CT(VC2)



CT-R



ANT



AT



BT



GT



ET



FT



DT



VC6



AD-1



AD-2





→ Valve Tools



TAO-11 TAO-12 TAO-13 TAO-14 TAO-15 TAO-16



TAO-17 TAO-18 TAO-19 TAO-20 TAO-21



TAO-22 TAO-23 TAO-24 TAO-25 TAO-26



TAO-27 TAO-28 TAO-29 TAO-30 TAO-31

Wheel Weight
Keep Your Wheels Running





Fe Adhesive Wheel Weights



Part # TA0-FE1

Material: Steel (FE), 100% Lead Free

Spec: 5gx12 / 5gx4+10gx4

Tape: Standard Blue Tape / Oversized Blue Tape

Finish: Galvanized Finishing (Zinc Plated)

Package: 100pcs/box



Part # TA0-FE2

Material: Steel (FE), 100% Lead Free

Spec: 5gx12 / 5gx4+10gx4

Tape: Standard Blue Tape / Oversized Blue Tape

Finish: Galvanized Finishing (Zinc Plated)

Package: 100pcs/box



Part # TA0-FE5

Material: Steel (FE), 100% Lead Free

Spec: 5gx12 / 5gx4+10gx4

Tape: Standard Blue Tape / Oversized Blue Tape

Finish: Plastic coating (Black)

Package: 100pcs/box



Part # TA0-FE6

Material: Steel (FE), 100% Lead Free

Spec: 5g x 1200 pcs

Tape: Standard Blue Tape

Finish: Plastic Coating / Zinc Plated.

Package: 1 Roll / Carton



Part # TA0-FE3

Material: Steel (FE), 100% Lead Free

Spec: 5gx12 / 5gx4+10gx4

Tape: Standard Blue Tape / Oversized Blue Tape

Finish: Plastic coating (Silver / Black)

Package: 100pcs/box



Part # TA0-FE4

Material: Steel (FE), 100% Lead Free

Spec: 5gx12 / 5gx4+10gx4

Tape: Standard Blue Tape / Oversized Blue Tape

Finish: Plastic coating (Silver / Black)

Package: 100pcs/box



Part # TA0-FE7

Material: Steel (FE), 100% Lead Free

Spec: 1/4 OZ x12 / 1/2 OZ x 6

Tape: Standard Blue Tape / Oversized Blue Tape

Finish: Plastic Coating / Zinc Plated.

Package: 50pcs/box



Part # TA0-FE8

Material: Steel (FE), 100% Lead Free

Spec: 1/4 OZ x12 / 1/2 OZ x 6

Tape: Standard Blue Tape / Oversized Blue Tape

Finish: Plastic Coating / Zinc Plated.

Package: 50pcs/box





Fe Clip Wheel Weights For Steel & Alloy Rim



Part # TA0-FE9-ST
Material: Steel (FE), 100% Lead Free
Range: 5g, 10g, 15g, 20g, 25g, 30g,
35g, 40g, 45g, 50g, 55g, 60g
Finish: Plastic Coated
Package: 5g-30g, 100pcs/box,
35g-60g, 50pcs/box.



Part # TA0-FE9-AL
Material: Steel (FE), 100% Lead Free
Range: 5g, 10g, 15g, 20g, 25g, 30g,
35g, 40g, 45g, 50g, 55g, 60g
Finish: Plastic Coated
Package: 5g-30g, 100pcs/box,
35g-60g, 50pcs/box.



Part # TA0-FE10-ST
Material: Steel (FE), 100% Lead Free
Range: 5g, 10g, 15g, 20g, 25g, 30g,
35g, 40g, 45g, 50g, 55g, 60g
Finish: Plastic Coated
Package: 5g-30g, 100pcs/box,
35g-60g, 50pcs/box.



Part # TA0-FE10-AL
Material: Steel (FE), 100% Lead Free
Range: 5g, 10g, 15g, 20g, 25g, 30g,
35g, 40g, 45g, 50g, 55g, 60g
Finish: Plastic Coated
Package: 5g-30g, 100pcs/box,
35g-60g, 50pcs/box.



Part # TA0-ZN1-ST
Material: Zinc (ZN), 100% Lead Free
Range: 5g, 10g, 15g, 20g, 25g, 30g,
35g, 40g, 45g, 50g, 55g, 60g
Finish: Plastic Coated
Package: 5g-30g, 100pcs/box,
35g-60g, 50pcs/box.



Part # TA0-ZN1-AL
Material: Zinc (ZN), 100% Lead Free
Range: 5g, 10g, 15g, 20g, 25g, 30g,
35g, 40g, 45g, 50g, 55g, 60g
Finish: Plastic Coated
Package: 5g-30g, 100pcs/box,
35g-60g, 50pcs/box.



Part # TA0-ZN2-ST
Material: Zinc (ZN), 100% Lead Free
Range: 5g, 10g, 15g, 20g, 25g, 30g,
35g, 40g, 45g, 50g, 55g, 60g
Finish: Plastic Coated
Package: 5g-30g, 100pcs/box,
35g-60g, 50pcs/box.



Part # TA0-ZN2-AL
Material: Zinc (ZN), 100% Lead Free
Range: 5g, 10g, 15g, 20g, 25g, 30g,
35g, 40g, 45g, 50g, 55g, 60g
Finish: Plastic Coated
Package: 5g-30g, 100pcs/box,
35g-60g, 50pcs/box.





→ Lead Wheel Weights For Cars & Trucks



Part # TAO-PB1-ST
Material: LEAD(PB)
Range: 5g, 10g, 15g, 20g, 25g, 30g,
35g, 40g, 45g, 50g, 55g, 60g
Finish: Uncoated
Package: 5g-30g, 100pcs/box,
35g-60g, 50pcs/box.



Part # TAO-PB1-AL
Material: LEAD(PB)
Range: 5g, 10g, 15g, 20g, 25g, 30g,
35g, 40g, 45g, 50g, 55g, 60g
Finish: Uncoated
Package: 5g-30g, 100pcs/box,
35g-60g, 50pcs/box.



Part # TAO-PB2-ST
Material: LEAD(PB)
Range: 0.25OZ, 0.5OZ, 0.75OZ, 1OZ,
1.25OZ, 1.5OZ, 1.75OZ, 2OZ
Finish: Uncoated
Package: 0.25OZ-1OZ, 100pcs/box,
1.25OZ-2OZ, 50pcs/box.



Part # TAO-PB2-AL
Material: LEAD(PB)
Range: 0.25OZ, 0.5OZ, 0.75OZ, 1OZ,
1.25OZ, 1.5OZ, 1.75OZ, 2OZ
Finish: Uncoated
Package: 0.25OZ-1OZ, 100pcs/box,
1.25OZ-2OZ, 50pcs/box.



Part # TAO-PB3
Material: LEAD(PB)
Spec: 5gx12 / 5gx4+10gx4
1/4OZx12 / 1/2OZx6
Tape: Standard Blue Tape / Oversized Blue Tape
Finish: Uncoated/ Coated
Package: 100pcs/box



Part # TAO-PB4
Material: LEAD(PB)
Spec: 50g, 75g, 100g, 150g, 200g,
250g, 300g, 350g, 400g
Finish: Uncoated/ Coated

Tire Repair Plugs & Kits ←



TAO-001



TAO-002



TAO-003



TAO-004

Part No.	Description	Diameter/Length	Package/box
TAO-001	Motorcycle and Car Tire String in Color Black	3.5mm/100mm(4")	10 string/card, 12cards/box
TAO-002	Motorcycle and Car Tire String in Color Black	3.5mm/200mm(8")	10 string/card, 6cards/box
TAO-003	Truck and Bus Tire Seal String in Color Brown	6.0mm/100mm(4")	5 string/card, 12cards/box
TAO-004	Truck and Bus Tire Seal String in Color Brown	6.0mm/200mm(8")	5 string/card, 6cards/box
TAO-005	Motorcycle and Car Tire String in Color Brown	3.5mm/100mm(4")	10 string/card, 12cards/box
TAO-006	Motorcycle and Car Tire String in Color Brown	3.5mm/200mm(8")	10 string/card, 6cards/box
TAO-007	Truck and Bus Tire Seal String in Color Black	6.0mm/100mm(4")	5 string/card, 12cards/box
TAO-008	Truck and Bus Tire Seal String in Color Black	6.0mm/200mm(8")	5 string/card, 6cards/box



TAO-TRK01



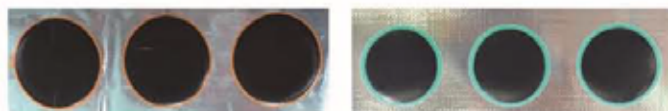
TAO-TRK02



→ Tire Repair Combi & European Style Patches

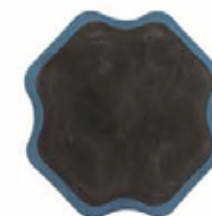


Combi Patch		Patch diameter (mm)	Pcs/box
Part No.	Stem Diameter/mm		
COMBI4	4	26	24
COMBI4L	4	36	24
COMBI6	6	36	24
COMBI6L	6	46	24
COMBI9	9	50	24
COMBI9L	9	60	24



ALL PURPOSE REPAIR PATCH FOR PASSENGER CAR TIRE AND TUBE		Specification (mm)	Pcs/box
Part No.	Description		
EP0025	ROUND	25	64
EP0030	ROUND	30	36
EP0040	ROUND	40	25
EP0052	ROUND	52	16
EP3424	OVAL	34×24	48
EP5032	OVAL	50×32	24
EP7240	OVAL	72×40	15

BIAS TIRE REPAIR PATCH FOR ON AND OFF ROAD		Specification (mm)	Pcs/box
Part No.	Description		
EP2075	CROSS, 1 PLY	75×75	20
EP2090	CROSS, 2 PLIES	90×90	10
EP20102	CROSS, 2 PLIES	102×102	10
EP20105	CROSS, 2 PLIES	105×105	10
EP20115	CROSS, 2 PLIES	115×115	10
EP20135	CROSS, 4 PLIES	135×135	10
EP20140	CROSS, 4 PLIES	140×140	10
EP20165	CROSS, 4 PLIES	165×165	10
EP20175	CROSS, 4 PLIES	175×175	10
EP20190	CROSS, 4 PLIES	190×190	10
EP20215	CROSS, 4 PLIES	215×215	10
EP20250	CROSS, 6 PLIES	250×250	5
EP20260	CROSS, 6 PLIES	260×260	5
EP20265	CROSS, 6 PLIES	265×265	5
EP20300	CROSS, 6 PLIES	300×300	5
EP20320	CROSS, 6 PLIES	320×320	5
EP20350	CROSS, 8 PLIES	350×350	5



RADIAL TIRE REPAIR PATCH FOR ON AND OFF ROAD		Specification (mm)	Pcs/box
Part No.	Description		
EP304576	RECTANGULAR, 1 PLY	45×76	20
EP305075	RECTANGULAR, 1 PLY	50×75	20
EP305575	RECTANGULAR, 1 PLY	55×75	20
EP305585	RECTANGULAR, 1 PLY	55×85	20
EP3065105	RECTANGULAR, 1 PLY	65×105	20
EP307590	RECTANGULAR, 1 PLY	75×90	20
EP3095100	RECTANGULAR, 1 PLY	95×100	10
EP3075125	RECTANGULAR, 2 PLIES	75×125	10
EP3075150	RECTANGULAR, 2 PLIES	75×150	10
EP3080125	RECTANGULAR, 2 PLIES	80×125	10
EP3090135	RECTANGULAR, 3 PLIES	90×135	10
EP3090155	RECTANGULAR, 3 PLIES	90×155	10
EP30100190	RECTANGULAR, 4 PLIES	100×190	10
EP30100200	RECTANGULAR, 4 PLIES	100×200	10
EP30115125	RECTANGULAR, 3 PLIES	115×125	10
EP30115200	RECTANGULAR, 4 PLIES	115×200	10
EP30125215	RECTANGULAR, 4 PLIES	125×215	10
EP30130190	RECTANGULAR, 4 PLIES	130×190	10
EP30150150	RECTANGULAR, 6 PLIES	150×150	10





→ Chemicals & USA Style Patches



CHEMICALS		Pcs/box
Part No.	Description	
VEM-250	VULCANIZING, 250 ML	40
VEM-500	VULCANIZING, 500 ML	20
BSL-250	BEAD SEALER, 250 ML	10
BSL-1000	BEAD SEALER, 1000 ML	40
PST-1	TIRE MOUNTING PASTA, 1 KG	8
PST-3	TIRE MOUNTING PASTA, 3 KG	4
PST-5	TIRE MOUNTING PASTA, 5 KG	2



ALL PURPOSE REPAIR PATCH FOR CAR TIRE AND TUBE		Specification (mm)	Pcs/box
Part No.	Description		
AP0035	ROUND	35	50
AP0045	ROUND	45	50
AP0060	ROUND	60	30
AP0065	ROUND	65	30
AP0075	ROUND	75	30
AP0080	ROUND	80	30
AP4545	SQUARE	45×45	60
AP5555	SQUARE	55×55	40



RADIAL TIRE REPAIR PATCH FOR ON AND OFF ROAD		Specification (mm)	Pcs/box
Part No.	Description		
AP304575	RECTANGULAR, 1 PLY	45×75	20
AP3060100	RECTANGULAR, 1 PLY	60×100	10
AP3075125	RECTANGULAR, 2 PLIES	75×125	10
AP3075145	RECTANGULAR, 2 PLIES	75×145	10
AP3075165	RECTANGULAR, 2 PLIES	75×165	10
AP3075215	RECTANGULAR, 3 PLIES	75×215	10
AP3075250	RECTANGULAR, 3 PLIES	75×250	10
AP30100125	RECTANGULAR, 3 PLIES	100×125	10
AP30100200	RECTANGULAR, 3 PLIES	100×200	10
AP30125170	RECTANGULAR, 3 PLIES	125×170	10
AP30125250	RECTANGULAR, 4 PLIES	125×250	10
AP30125325	RECTANGULAR, 4 PLIES	125×325	10



BIAS TIRE REPAIR PATCH FOR ON AND OFF ROAD		Specification (mm)	Pcs/box
Part No.	Description		
AP2060	ROUND, 1 PLY	60	25
AP2075	ROUND, 1 PLY	75	20
AP2090	CROSS, 2 PLIES	90×90	10
AP20100	CROSS, 2 PLIES	100×100	10
AP20130	CROSS, 4 PLIES	130×130	10
AP20165	CROSS, 4 PLIES	165×165	10
AP20240	CROSS, 6 PLIES	240×240	5
AP20290	CROSS, 6 PLIES	290×290	5



→ Bolts

Hex 17MM	Part #	Thread Size
	1215-000	12x1.50x24MM
	1215-001	12x1.50x26MM
	1215-002	12x1.50x28MM
	1215-003	12x1.50x30MM
	1215-004	12x1.50x35MM
	1215-005	12x1.50x40MM
	1215-006	12x1.50x45MM
	1215-007	12x1.50x50MM
	1215-008	12x1.50x55MM

Hex 17MM	Part #	Thread Size
	1215-111	12x1.50x24MM
	1215-112	12x1.50x26MM
	1215-113	12x1.50x28MM
	1215-114	12x1.50x30MM
	1215-115	12x1.50x35MM
	1215-116	12x1.50x40MM
	1215-117	12x1.50x45MM
	1215-118	12x1.50x50MM
	1215-119	12x1.50x55MM

Hex 17MM	Part #	Thread Size
	12125-000	12x1.25x24MM
	12125-001	12x1.25x26MM
	12125-002	12x1.25x28MM
	12125-003	12x1.25x30MM
	12125-004	12x1.25x35MM
	12125-005	12x1.25x40MM
	12125-006	12x1.25x45MM
	12125-007	12x1.25x50MM
	12125-008	12x1.25x55MM

Hex 17MM	Part #	Thread Size
	12125-111	12x1.25x24MM
	12125-112	12x1.25x26MM
	12125-113	12x1.25x28MM
	12125-114	12x1.25x30MM
	12125-115	12x1.25x35MM
	12125-116	12x1.25x40MM
	12125-117	12x1.25x45MM
	12125-118	12x1.25x50MM
	12125-119	12x1.25x55MM

Hex 17MM	Part #	Thread Size
	1415-000	14x1.50x24MM
	1415-001	14x1.50x26MM
	1415-002	14x1.50x28MM
	1415-003	14x1.50x30MM
	1415-004	14x1.50x35MM
	1415-005	14x1.50x40MM
	1415-006	14x1.50x45MM
	1415-007	14x1.50x50MM
	1415-008	14x1.50x60MM

Hex 17MM	Part #	Thread Size
	1415-111	14x1.50x24MM
	1415-112	14x1.50x26MM
	1415-113	14x1.50x28MM
	1415-114	14x1.50x30MM
	1415-115	14x1.50x35MM
	1415-116	14x1.50x40MM
	1415-117	14x1.50x45MM
	1415-118	14x1.50x50MM
	1415-119	14x1.50x60MM

	Part #	Thread Size
	1215-100	12x1.50x24MM
	1215-101	12x1.50x26MM
	1215-102	12x1.50x28MM
	1215-103	12x1.50x30MM
	1215-104	12x1.50x35MM
	1215-105	12x1.50x40MM
	1215-106	12x1.50x45MM

	Part #	Thread Size
	1215-1111	12x1.50x24MM
	1215-1112	12x1.50x26MM
	1215-1113	12x1.50x28MM
	1215-1114	12x1.50x30MM
	1215-1115	12x1.50x35MM
	1215-1116	12x1.50x40MM
	1215-1117	12x1.50x45MM

	Part #	Thread Size
	12125-100	12x1.25x24MM
	12125-101	12x1.25x26MM
	12125-102	12x1.25x28MM
	12125-103	12x1.25x30MM
	12125-104	12x1.25x35MM
	12125-105	12x1.25x40MM
	12125-106	12x1.25x45MM

	Part #	Thread Size
	12125-1111	12x1.25x24MM
	12125-1112	12x1.25x26MM
	12125-1113	12x1.25x28MM
	12125-1114	12x1.25x30MM
	12125-1115	12x1.25x35MM
	12125-1116	12x1.25x40MM

	Part #	Thread Size
	14150-100	14x1.50x24MM
	14150-101	14x1.50x26MM
	14150-102	14x1.50x28MM
	14150-103	14x1.50x30MM
	14150-104	14x1.50x35MM
	14150-105	14x1.50x40MM
	14150-106	14x1.50x45MM

	Part #	Thread Size
	1415-1111	14x1.50x24MM
	1415-1112	14x1.50x26MM
	1415-1113	14x1.50x28MM
	1415-1114	14x1.50x30MM
	1415-1115	14x1.50x35MM
	1415-1116	14x1.50x40MM
	1415-1117	14x1.50x45MM
	1415-1118	14x1.50x50MM
	1415-1119	14x1.50x60MM
	1415-1120	14x1.50x70MM



6 Splines Key

17mm & 19mm

Hex 17MM	Part #	Thread Size
	12125-00	12x1.25x24MM
	12125-01	12x1.25x26MM
	12125-02	12x1.25x28MM
	12125-03	12x1.25x30MM
	12125-04	12x1.25x40MM



→ Nuts

Hex 17MM	Part #	THREAD SIZE (mm)
	170001	3/8
	170002	7/16
	170003	1/2
	170004	12 x 1.25
	170005	12 x 1.50
	170006	12 x 1.75

Hex 17MM	Part #	THREAD SIZE (mm)
	170007	3/8
	170008	7/16
	170009	1/2
	170010	12 x 1.25
	170011	12 x 1.50
	170012	12 x 1.75

Hex 21MM	Part #	THREAD SIZE (mm)
	170053	3/8
	170054	7/16
	170055	1/2
	170056	12 x 1.25
	170057	12 x 1.50
	170058	12 x 1.75
	170059	14x1.50

Hex 21MM	Part #	THREAD SIZE (mm)
	170060	3/8
	170061	7/16
	170062	1/2
	170063	12 x 1.25
	170064	12 x 1.50
	170065	12 x 1.75
	170066	14x1.50

Hex 17MM	Part #	THREAD SIZE (mm)
	170013	3/8
	170014	7/16
	170015	1/2
	170016	12 x 1.25
	170017	12 x 1.50
	170018	12 x 1.75

Hex 17MM	Part #	THREAD SIZE (mm)
	170019	3/8
	170020	7/16
	170021	1/2
	170022	12 x 1.25
	170023	12 x 1.50
	170024	12 x 1.75

	Part #	THREAD SIZE (mm)
	170067	3/8
	170068	7/16
	170069	1/2
	170070	12 x 1.25
	170071	12 x 1.50
	170072	12 x 1.75
	170073	14x1.50

	Part #	THREAD SIZE (mm)
	170074	3/8
	170075	7/16
	170076	1/2
	170077	12 x 1.25
	170078	12 x 1.50
	170079	12 x 1.75

Hex 18MM	Part #	THREAD SIZE (mm)
	170025	7/16
	170026	1/2
	170027	12 x 1.25
	170028	12 x 1.50
	170029	12 x 1.75
	170030	14x1.50
	170031	14x2.00

Hex 18MM	Part #	THREAD SIZE (mm)
	170032	3/8
	170033	7/16
	170034	1/2
	170035	12 x 1.25
	170036	12 x 1.50
	170037	12 x 1.75
	170038	14x1.50

	Part #	THREAD SIZE (mm)
	170080	3/8
	170081	7/16
	170082	1/2
	170083	12 x 1.25
	170084	12 x 1.50
	170085	12 x 1.75

	Part #	THREAD SIZE (mm)
	170086	3/8
	170087	7/16
	170088	1/2
	170089	12 x 1.25
	170090	12 x 1.50
	170091	12 x 1.75

Hex 18MM	Part #	THREAD SIZE (mm)
	170039	7/16
	170040	1/2
	170041	12 x 1.25
	170042	12 x 1.50
	170043	12 x 1.75
	170044	14x1.50
	170045	14x2.00

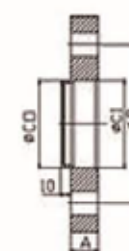
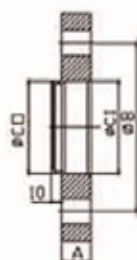
Hex 21MM	Part #	THREAD SIZE (mm)
	170046	3/8
	170047	7/16
	170048	1/2
	170049	12 x 1.25
	170050	12 x 1.50
	170051	12 x 1.75
	170052	14x1.50

	Part #	THREAD SIZE (mm)
	170092	3/8
	170093	7/16
	170094	1/2
	170095	12 x 1.25
	170096	12 x 1.50
	170097	12 x 1.75

	Part #	THREAD SIZE (mm)
	170098	3/8
	170099	7/16
	170100	1/2
	170101	12 x 1.25
	170102	12 x 1.50
	170103	12 x 1.75



→ Spacers



Part No.	Thickness (A)	Hole Q'ty	Hole Dia.(B)	Centerbore In(CI)	Centerbore Out(CO)	Bolthole Dia.(D)
TAOS0101	10mm	4	108	65.1	65.1	13mm
TAOS0113	13mm	8	4*108 and 4*100	65.1	65.1	13mm
TAOS0108	15mm	4	100	57.1	57.1	13mm
TAOS0109	15mm	4	100	60.1	60.1	13mm
TAOS0102	15mm	4	108	65.1	65.1	13mm
TAOS0107	15mm	5	112	66.6	66.6	14.5mm
TAOS0110	15mm	5	120	72.5	72.5	13mm
TAOS0116	15mm	5	120	72.5	72.5	14.5mm
TAOS0112	15mm	10	5*100 and 5*112	57.1	57.1	14.5mm
TAOS0106	20mm	4	100	57.1	57.1	13mm
TAOS0104	20mm	4	108	65.1	65.1	13mm
TAOS0105	20mm	5	112	66.6	66.6	14.5mm
TAOS0111	20mm	5	120	72.5	72.5	13mm
TAOS0115	21mm	4	108	65.1	65.1	13mm
TAOS0103	25mm	4	108	65.1	65.1	13mm
TAOS014	35mm	4	108	65.1	65.1	13mm

Part No.	Thickness (A)	Hole Q'ty	Hole Dia.(B)	Centerbore In(CI)	Centerbore Out(CO)	Bolthole Dia.(D)
TAOS0201	10mm	4	108	65.1	65.1	13mm
TAOS0213	13mm	8	4*108 and 4*100	65.1	65.1	13mm
TAOS0208	15mm	4	100	57.1	57.1	13mm
TAOS0209	15mm	4	100	60.1	60.1	13mm
TAOS0202	15mm	4	108	65.1	65.1	13mm
TAOS0207	15mm	5	112	66.6	66.6	14.5mm
TAOS0210	15mm	5	120	72.5	72.5	13mm
TAOS0216	15mm	5	120	72.5	72.5	14.5mm
TAOS0212	15mm	10	5*100 and 5*112	57.1	57.1	14.5mm
TAOS0206	20mm	4	100	57.1	57.1	13mm
TAOS0204	20mm	4	108	65.1	65.1	13mm
TAOS0205	20mm	5	112	66.6	66.6	14.5mm
TAOS0211	20mm	5	120	72.5	72.5	13mm
TAOS0215	21mm	4	108	65.1	65.1	13mm
TAOS0203	25mm	4	108	65.1	65.1	13mm
TAOS024	35mm	4	108	65.1	65.1	13mm



→ Adapters

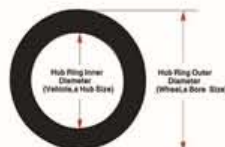


Part Number	Hole Q'ty	Hole Dia(mm)	Bolthole Q'ty	Bolthole	Dia(mm) I.D.(mm)	O.D.(mm)
TAOA4401	4	95.25	4	100	71	150
TAOA4402	4	98	4	100	71	150
TAOA4403	4	98	4	114.3	71	150
TAOA4404	4	100	4	114.3	71	150
TAOA4405	4	102	4	114.3	71	150
TAOA4406	4	108	4	108	71	150
TAOA4407	4	108	4	100	71	150
TAOA4408	4	110	4	100	71	150
TAOA4409	4	110	4	114.3	74	164
TAOA4410	4	114.3	4	114.3	71	150
TAOA4411	4	114.3	4	100	71	150
TAOA5501	5	98	5	100	74	164
TAOA5502	5	100	5	114.3	71	150
TAOA5503	5	100	5	100	71	150
TAOA5504	5	102	5	114.3	74	164
TAOA5505	5	107.95	5	114.3	74	164
TAOA5506	5	108	5	108	74	164
TAOA5507	5	108	5	120	74	164
TAOA5508	5	110	5	100	74	164

TAOA5509	5	110				www.exportize.co.uk
TAOA5510	5	112	5	114.3	74	164
TAOA5511	5	114.3	5	120.65	74	164
TAOA5512	5	114.3	5	114.3	74	164
TAOA5513	5	114.3	5	120	74	164
TAOA5514	5	114.3	5	139.7	74	164
TAOA5515	5	114.3	5	127	78	164
TAOA5516	5	114.3	5	135	87.18	176
TAOA5517	5	118	5	120	74	164
TAOA5518	5	120	5	120	74	164
TAOA5519	5	120.65	5	127	74	164
TAOA5520	5	120.65	5	126.65	74	164
TAOA5521	5	120.65	5	100	74	164
TAOA5522	5	120.65	5	114.3	74	164
TAOA5523	5	120.65	5	112	74	164
TAOA5524	5	120.65	5	135	87.1	176
TAOA5525	5	127	5	127	78	164
TAOA5526	5	127	5	139.7	87.1	176
TAOA5527	5	127	5	135	87.1	176
TAOA5528	5	130	5	139.7	87.1	176
TAOA5529	5	135	5	114.3	87.1	176
TAOA5530	5	135	5	135	87.1	176
TAOA5531	5	135	5	139.7	87.1	176
TAOA5532	5	139.7	5	120.65	74	164
TAOA5533	5	139.7	5	114.3	82.5	176
TAOA5534	5	139.7	5	139.7	108/82.55/78	176/167/176
TAOA5535	5	150	5	139.7	108	186
TAOA5536	5	160	5	139.7	108	186
TAOA6601	6	127	6	139.7	108	176
TAOA6602	6	135	6	139.7	108	176
TAOA6603	6	139.7	6	139.7	108/78	176/176
TAOA8801	8	165.1	8	165.1	126.15	216
TAOA8802	8	170	8	170	125	216
TAOA8803	8	200	8	200	125	246



→ Aluminum & Plastic Hub Rings



Part No.	Spec.(mm)	Part No.	Spec.(mm)	Part No.	Spec.(mm)	Part No.	Spec.(mm)
TAOR60-5410	60.1-54.1	TAOR67-6340	67.1-63.4	TAOR72-7010	72.6-70.1	TAOR74-5660	74-56.6
TAOR60-5610	60.1-56.1	TAOR67-6410	67.1-64.1	TAOR72-7030	72.6-70.3	TAOR74-5710	74-57.1
TAOR60-5660	60.1-56.6	TAOR70-5410	70.1-54.1	TAOR72-7050	72.6-70.5	TAOR74-5810	74-58.1
TAOR60-5710	60.1-57.1	TAOR70-5610	70.1-56.1	TAOR73-5410	73.1-54.1	TAOR74-5910	74-59.1
TAOR60-5810	60.1-58.1	TAOR70-5660	70.1-56.6	TAOR73-5610	73.1-56.1	TAOR74-6010	74-60.1
TAOR63-5410	63.4-54.1	TAOR70-5710	70.1-57.1	TAOR73-5660	73.1-56.6	TAOR74-6340	74-63.4
TAOR63-5610	63.4-56.1	TAOR70-5810	70.1-58.1	TAOR73-5710	73.1-57.1	TAOR74-6390	74-63.9
TAOR63-5660	63.4-56.6	TAOR70-5910	70.1-59.1	TAOR73-5810	73.1-58.1	TAOR74-6410	74-64.1
TAOR63-5710	63.4-57.1	TAOR70-6010	70.1-60.1	TAOR73-5860	73.1-58.6	TAOR74-6510	74-65.1
TAOR63-5810	63.4-58.1	TAOR70-6340	70.1-63.4	TAOR73-5910	73.1-59.1	TAOR74-6610	74-66.1
TAOR63-5910	63.4-59.1	TAOR70-6510	70.1-65.1	TAOR73-5960	73.1-59.6	TAOR74-6660	74-66.6
TAOR64-5410	64-54.1	TAOR70-6660	70.1-66.6	TAOR73-6010	73.1-60.1	TAOR74-6710	74-67.1
TAOR64-5610	64-56.1	TAOR72-5410	72.6-54.1	TAOR73-6340	73.1-63.4	TAOR74-7010	74-70.1
TAOR64-5660	64-56.6	TAOR72-5610	72.6-56.1	TAOR73-6350	73.1-63.5	TAOR74-7030	74-70.3
TAOR64-5710	64-57.1	TAOR72-5660	72.6-56.6	TAOR73-6390	73.1-63.9	TAOR74-7150	74-71.5
TAOR64-5810	64-58.1	TAOR72-5710	72.6-57.1	TAOR73-6410	73.1-64.1	TAOR74-7260	74-72.6
TAOR64-5910	64-59.1	TAOR72-5920	72.6-59.2	TAOR73-6510	73.1-65.1	TAOR78-6610	78.1-66.1
TAOR64-6010	64-60.1	TAOR72-5960	72.6-59.6	TAOR73-6610	73.1-66.1	TAOR78-6656	78.1-66.56
TAOR67-5410	67.1-54.1	TAOR72-6010	72.6-60.1	TAOR73-6660	73.1-66.6	TAOR78-7030	78.1-70.3
TAOR67-5610	67.1-56.1	TAOR72-6340	72.6-63.4	TAOR73-6710	73.1-67.1	TAOR78-7150	78.1-71.5
TAOR67-5660	67.1-56.6	TAOR72-6390	72.6-63.9	TAOR73-7010	73.1-70.1	TAOR78-7256	78.1-72.56
TAOR67-5710	67.1-57.1	TAOR72-6410	72.6-64.1	TAOR73-7030	73.1-70.3	TAOR78-7410	78.1-74.1
TAOR67-5860	67.1-58.6	TAOR72-6610	72.6-66.1	TAOR73-7150	73.1-71.5	TAOR108-7810	108-78.1
TAOR67-5910	67.1-59.1	TAOR72-6660	72.6-66.6	TAOR73-5410	74-54.1	TAOR108-1000	108-100
TAOR67-6010	67.1-60.1	TAOR72-6710	72.6-67.1	TAOR73-5610	74-56.1		

Truck Torque Multiplier ←



TAO-58-1
Material: 40Cr
Length: 270mm
Gear ratio: 1:58
Max safe output torque: 3800N.M
Weight: 7.5kg/set
Carton size: 38*38*21cm
Sockets: 2pcs



TAO-58-2
Material: 40Cr
Length: 270mm
Gear ratio: 1:58
Max safe output torque: 3800N.M
Weight: 13kg/set
Carton size: 40*27.5*31.5cm
Sockets: 8pcs



TAO-68L
Material: 40Cr
Length: 310mm
Gear ratio: 1:68
Max safe output torque: 4800N.M
Weight: 8.5kg/set
Carton size: 40*30*23.5cm
Sockets: 2pcs



TAO-78-1
Material: 40Cr
Length: 330mm
Gear ratio: 1:78
Max safe output torque: 5800N.M
Weight: 9.5kg/set
Carton size: 42*34*22cm
Sockets: 2pcs



Socket size:
17mm 19mm 21mm 22mm,
24mm 27mm 30mm 32mm,
33mm 34mm 36mm 38mm 41mm



Available socket size:
17mm-41mm



→ Air Chucks & Gauges

← Other Popular tools



TAC01



TAC02



TAC03



TAC04



TAC05



Sticher 38-2mm



Sticher 38-3mm



Sticher 38-4mm



Sticher 38-5mm



Scraper-B



Scraper-R



TAC06



TAC07



TAC08



TAC09



TAC10



TAO-WT01



TAO-WT02



TAO-WT03



TAO-WT04



TAO-WT05



TAC11



TAC12



TAC13



TAC14



TAC15



TAO-DG01



TAO-DG02



TAO-DG03



PCD Gauge



TPG01



TPG02



TPG03



TPG04



TPG05



Rim Protector



TPR01



TPR02



TPR03



TPG06



TPG07



TPG08



TPG09



DI-01



CP01



CW01



CW02



Cambot Bolt



Equipment



TAO-Jack-1



TAO-Jack-2



TAO-Jack-3

Model	Capacity	Min. Height (mm)	Max. Height (mm)	Product size (mm)	N.W/G.W (kg)	Package size (mm)	QTY/20'CY (pcs)
TAO-Jack-1	2.5ton	140	520	675*344*180	35/37	730*380*215	450
TAO-Jack-2	3ton	135	500	645*345*190	30/32.5	690*385*200	500
TAO-Jack-3	2.5/3ton	85	455	640*342*174	34/35.8	690*380*210	470



TAO-Jack-4



TAO-Jack-5

Model	Capacity	Working air pressure	Min Height	Max Height	Lifting Height	Extension Height	N.W
TAO-Jack-4	40T/20T	0.8-1.2MPa	150mm	409mm	40T: 73mm 20T: 66mm	75mm+45mm	40kg
TAO-Jack-5	30T/15T	0.8-1.2MPa	175mm	472mm	30T: 98mm 15T: 79mm	75mm+45mm	39kg



PE-1



BI-5 Galon



TDT-3



TDT-7



TAO-WB-1

Specification	
Motor	110V/220V 50/60HZ
Power	0.25KW
Rim width	1.5"-12"
Rim diameter	12"-24"
Max tire diameter	1000 mm
Balancing speed	200 rpm
Balancing precision	±1 g



TAO-TC-1

Specification	
Motor	110V/220V/380V 50/60HZ
Power	1.1KW/0.75KW
Max tire diameter	1000 mm
Outside clamping	11"-22"
Inside clamping	13"-24"
Max tire width	320 mm
Operating pressure	8-10 bar



TCD-01



TCD-02



TCD-03



TCD-04



TAO-SL-35



Type	Lifting capacity	Lifting Height	System Pressure	Pressure Pneumatic	Motor Power	Voltage	N.W	Min. Height	Platform Length
TAO-SL-35	3.5 T 7716 LB	400/1850 mm 16/73 inch	25 Mpa	0.4-0.8 Mpa	3 KW	380/220 V	2.3T 5071LB	185 mm 7 inch	4300 mm 169 inch